

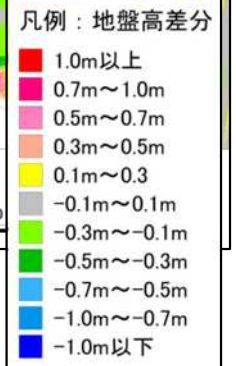
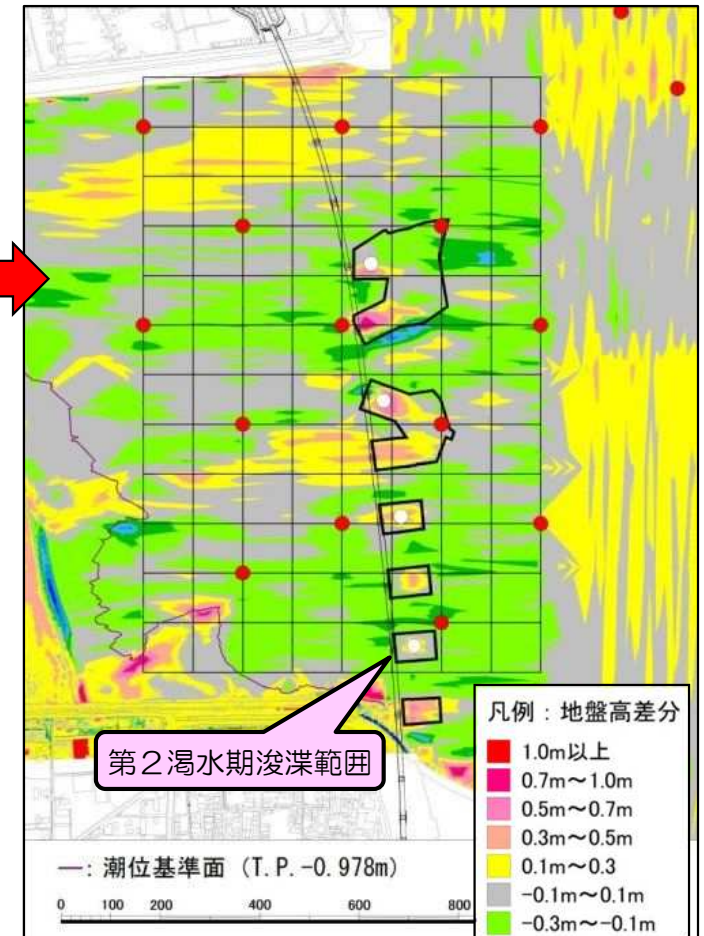
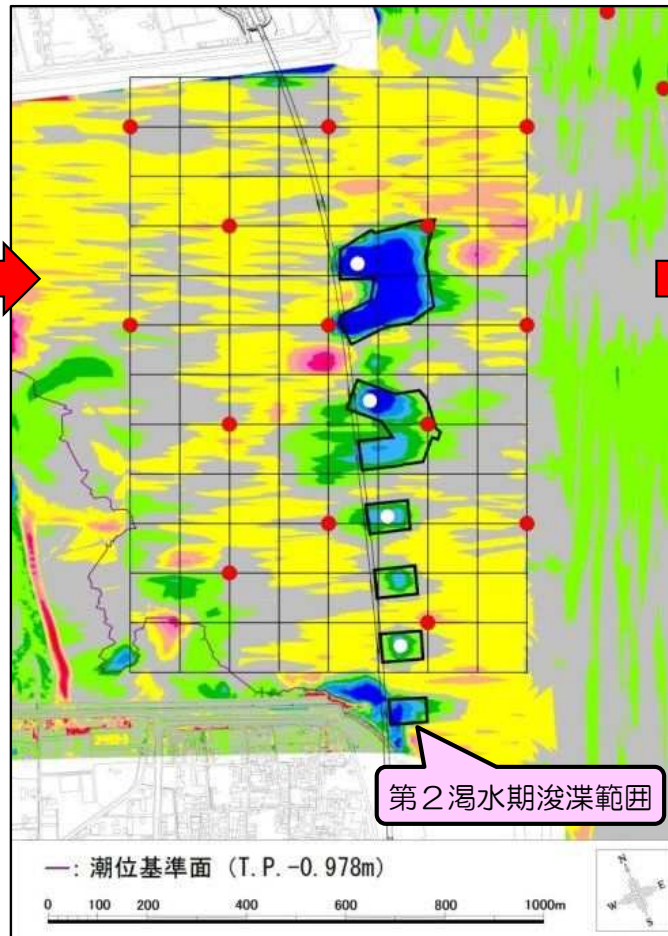
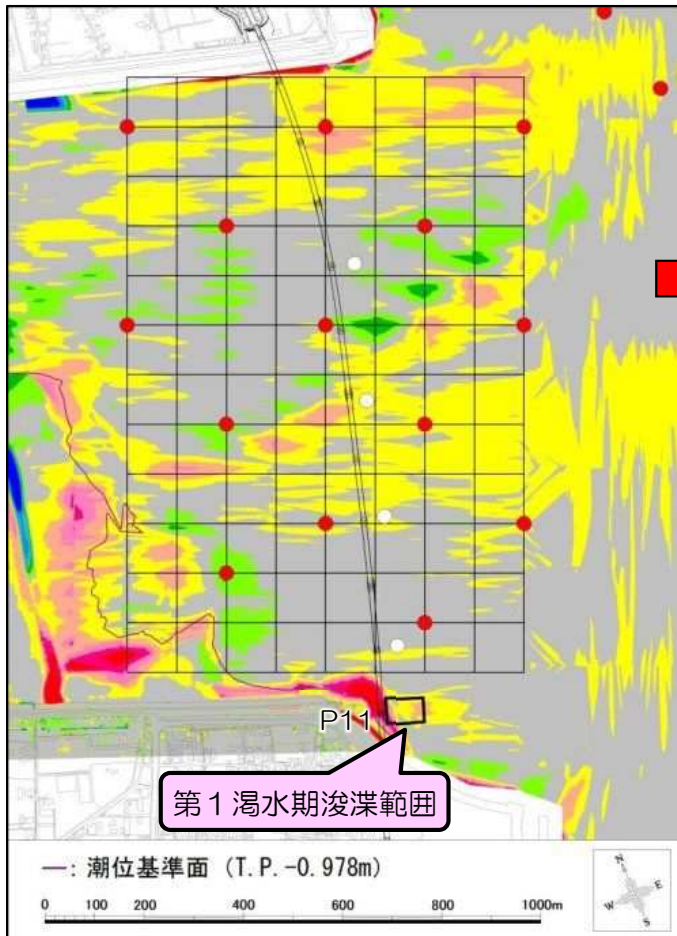
■環境モニタリング調査結果(地形差分図と浚渫範囲)

工事中

H28.6→H28.10 (出水期)

H28.10→H29.6 (湧水期)

H29.6→H29.10 (出水期)



● 潮下帯生物調査 調査地点

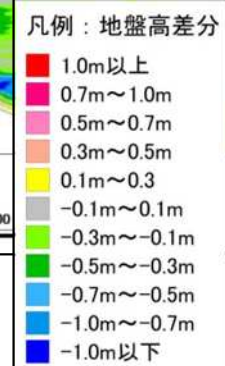
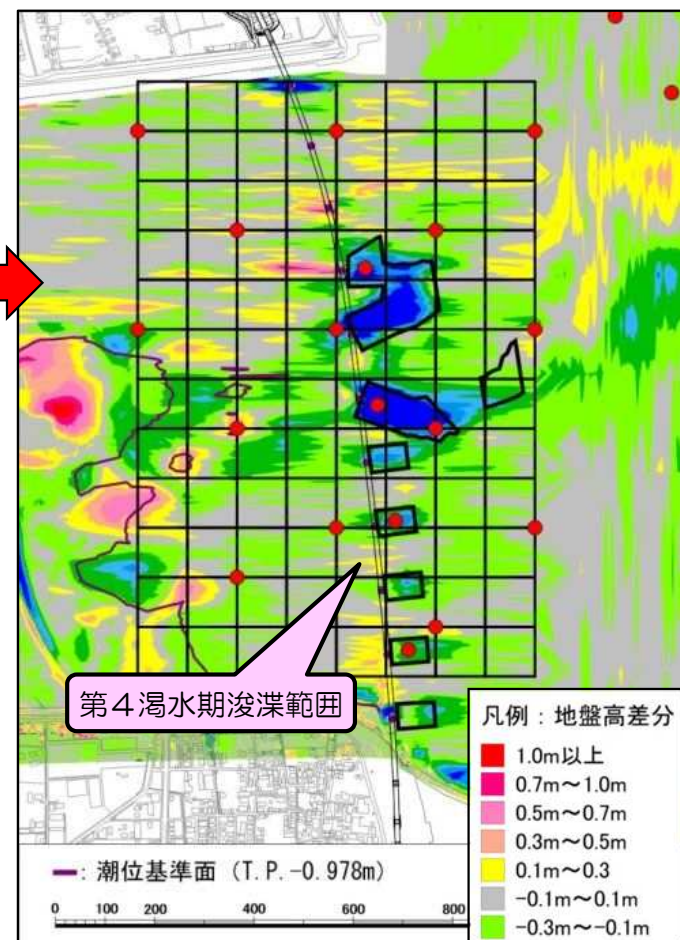
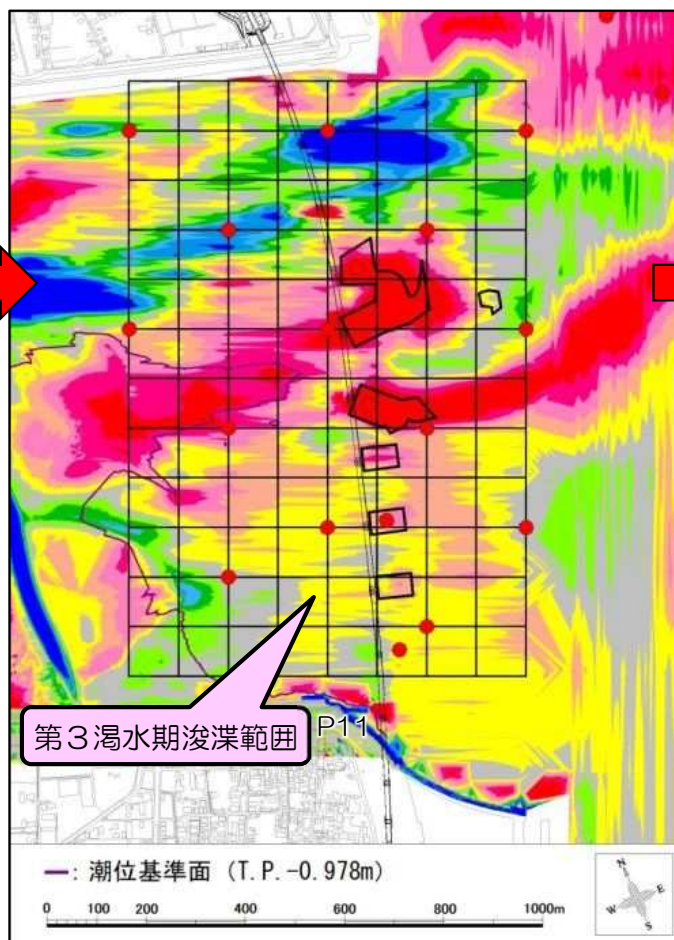
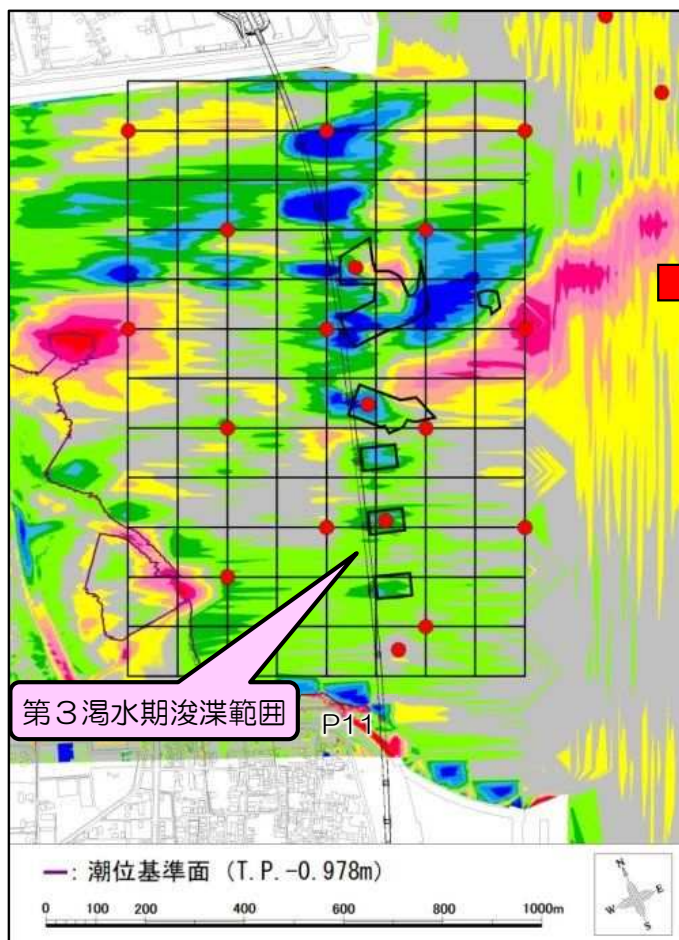
環境モニタリング調査結果(地形差分図と浚渫範囲)

工事中

H29.10→H30.6 (湧水期)

H30.6→H30.10 (出水期)

H30.10→R1.6 (湧水期)



● 潮下帯生物調査 調査地点

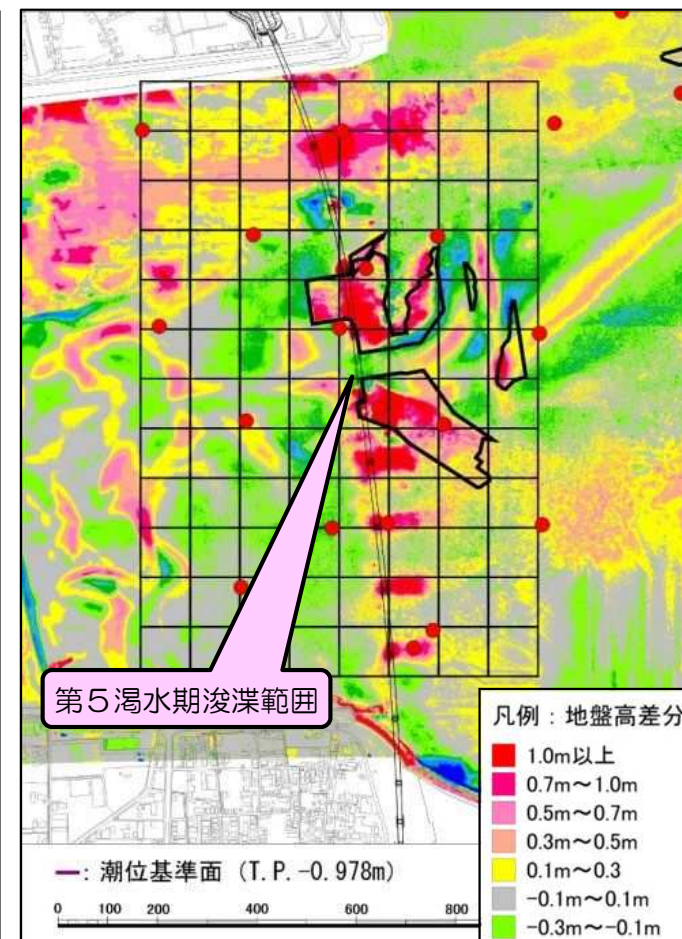
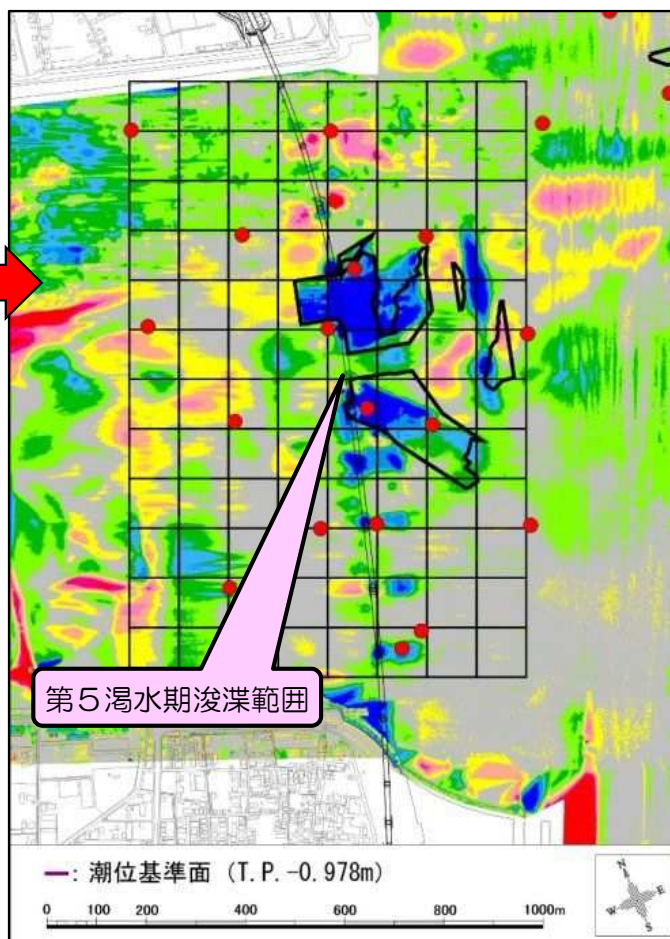
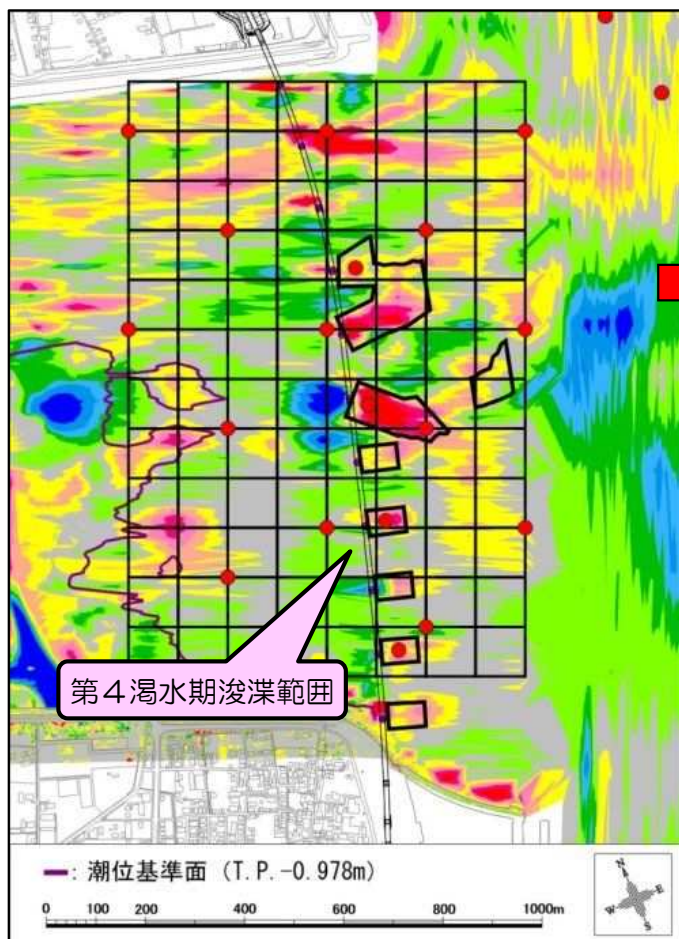
■環境モニタリング調査結果(地形差分図と浚渫範囲)

工事中

R1.6→R1.10 (出水期)

R1.10→R2.6 (湧水期)

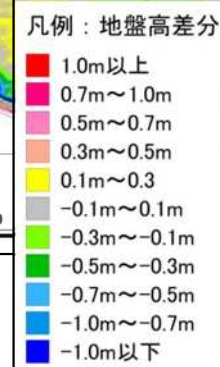
R2.6→R2.10 (出水期)



第4湧水期浚渫範囲

第5湧水期浚渫範囲

第5湧水期浚渫範囲



● 潮下帯生物調査 調査地点